



For More Information

- Sign up for the mailing list to receive newsletters, public meeting notices, and to be notified about where to find the Draft EIS when it is available for public comments (in spring 2006)



- Visit the project website at www.11thStreetBridgesEIS.com for:
 - Documents
 - Maps and photos
 - Presentations and newsletters
 - A calendar of public meetings and events
 - Answers to frequently asked questions



- Visit the AWI projects website at www.ddot.dc.gov/awi
- Contact DDOT's Project Manager, Faisal Hameed, phone (202) 671-4607

d. District Department of Transportation



CH2MHILL
901 New York Avenue, NW
Suite 5100 West
Washington, D.C. 20001

Place Stamp Here



11th STREET BRIDGES ENVIRONMENTAL IMPACT STATEMENT

COMMUNITY UPDATE

Issue No. 3 - January 2006

News & Events

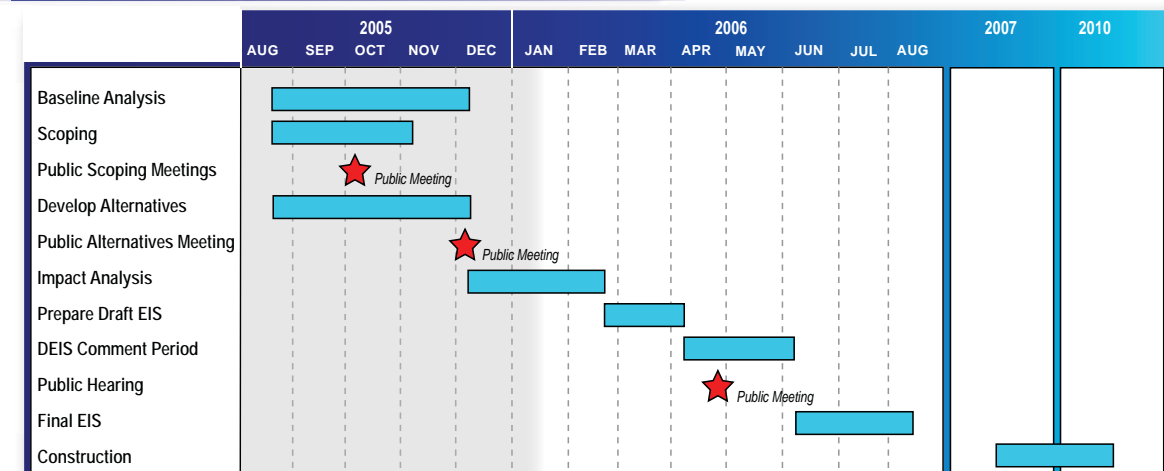
- **Alternatives are being revised**
Public meetings were held December 13 and 14, 2005, to discuss the project alternatives. This newsletter summarizes the issues that were raised at those meetings. The study team is now reviewing and considering comments from the public, agencies, and other stakeholders. This input will help to develop alternatives for detailed evaluation in the Environmental Impact Statement (EIS). The alternatives to be evaluated in the EIS will be presented in the next issue of this newsletter and on the project website at www.11thStreetBridgesEIS.com.
- **Upcoming public meetings**
The next round of public meetings will be held in spring 2006, to present the findings of the Draft EIS to the public. The specific dates, times and places of the meetings will be posted on the project website calendar, sent to the mailing list, and announced in local newspapers and a future issue of this newsletter.
- **Speakers are still available for community meetings**
Members of the 11th Street Bridges study team are continuing to meet with interested community groups in the project area. If you would like to host a discussion at your next community group meeting, please send an email to EleventhSt@ch2m.com or contact Faisal Hameed, DDOT Project Manager for the 11th Street Bridges EIS, at (202) 671-4607 or email faisal.hameed@dc.gov.

11TH STREET BRIDGES ENVIRONMENTAL IMPACT STATEMENT

DDOT and the Federal Highway Administration (FHWA) are preparing an EIS to examine the potential environmental and social impacts of reconstructing the 11th Street Bridges. In 2005, the study team has been documenting baseline environmental conditions and developing improvement alternatives that address the project's purpose and need. Once the alternatives are finalized this month, the study team can evaluate the impacts of each alternative, including a "No Build" alternative.



The Draft EIS will provide a comparison of the alternatives and will suggest mitigation measures to avoid, minimize, or compensate for potentially significant impacts. Based on the



The project schedule highlights ongoing and planned activity. Public meetings to discuss the findings of the Draft EIS are scheduled in April 2006. Construction could begin as early as fall 2007.



results of the analysis, the Draft EIS could identify DDOT's Preferred Alternative. The Draft EIS will be released for public comments in spring 2006.

The Final EIS is expected in summer 2006, after public and agency comments on the Draft EIS have been thoroughly considered. Both versions of the EIS will be available on the project website and at public libraries in the study area. After the Final EIS, a Record of Decision will formally document project decisions and the mitigation measures that DDOT will commit to carrying out as part of the project.

PROJECT ALTERNATIVES DISCUSSED AT PUBLIC MEETINGS

On December 13 and 14, 2005, nearly 60 members of the public came out to view and comment on the working alternatives for the 11th Street Bridges EIS. The working alternatives, other exhibits, and handouts from the meetings are available on the project website at www.11thStreetBridgesEIS.com.

A summary of issues raised at the December public meetings is provided below. A detailed record of comments and responses will become part of the Draft EIS.

- Will the project divert northbound interstate traffic from the Beltway/Wilson Bridge to the 11th Street Bridges?
- Will separating local and freeway traffic on the new bridges result in less convenient access from Anacostia to downtown or Virginia destinations via the Southeast/Southwest Freeway (I-395)?
- Which alternatives would best discourage cut-through, freeway-bound traffic in Fairlawn and other Anacostia neighborhoods?
- Which alternative has the least impact on the Fairlawn neighborhood?
- Is direct access via an interchange to the Anacostia Freeway from historic Anacostia needed?
- How effective will the project be in reducing traffic volumes on Capitol Hill streets?
- How would displacement of the boathouses and construction impacts to operations of the Anacostia Community Boathouse Association be mitigated?

11TH STREET BRIDGES EIS PUBLIC MEETINGS - DECEMBER 13TH & 14TH, 2005



- What type of access (stairway, ramp) will be provided for pedestrian and bicycle traffic on the bridge to reach the waterfront on either side?
- Should bicycle/pedestrian lanes be located close together (on the same bridge span) or farther apart (on different bridge spans) to make it easier to reach different destinations?
- What type of configuration provides the best service to the Washington Navy Yard?
- What are the effects of the new street patterns on traffic from the Washington Navy Yard and Maritime Plaza, and how will traffic operate at the intersection of 12th and M Streets?
- What is the best way to connect the freeway to local streets west of the river – traffic circle or intersection?

- Which of these designs would best reduce speeds through Capitol Hill?
 - What are the pros and cons of putting part of Anacostia Freeway underground?
- In addition to comments on different features of the alternatives, several people stressed environmental and social issues that the EIS should consider:
- The effects of construction noise, vibration and dust on residents, in particular the elderly
 - A process for supporting existing businesses that could be disrupted during construction
 - The potential for increased air pollution
 - The collection of stormwater on the bridges
 - The aesthetic effects of the new bridges and ramps

- The maintenance of pedestrian and bicycle traffic, as well as vehicle traffic, during the construction period
- A process for providing contracting opportunities and construction employment/training to local residents

BUILDING BRIDGES WITH PUBLIC INVOLVEMENT

During the fall and winter of 2005, the study team has been seeking comments and suggestions from a wide range of interested parties, from D.C. and federal government agencies to neighborhood associations. Efforts have included holding public scoping meetings in October, attending numerous community meetings (with several more planned), holding frequent meetings and telephone conferences with government agencies, establishing an Advisory Committee to preview the public meeting exhibits, and holding public meetings in December where alternatives were presented for public feedback.

The purpose of all this activity is simple but essential: to make the 11th Street Bridges project successful and a benefit to the community, by identifying and managing potential issues as early in the process as possible. DDOT recognizes and values the local knowledge and diverse expertise that all of these interested parties can offer.

HOW CAN I GET INVOLVED?

You can provide comments in many ways:

- Mail written comments to:
11th Street Bridges EIS
(c/o Justice and Sustainability Associates)
1920 L Street NW, Suite 500
Washington, DC 20036
- Email comments to:
EleventhSt@ch2m.com
- Fax comments to:
(202) 610-4471
- Call (202) 610-0005 to give spoken comments
- Use comment forms and surveys on the project website at www.11thStreetBridgesEIS.com