

Intermodal Improvements, US-2 – Leavenworth

Project Description

Location

City of Leavenworth

US-2 MP 99.05 to MP 100.30

Purpose & Need

The purpose of this project was to improve multiple modes of transportation on US-2 through the community of Leavenworth. This city relies heavily on the tourist industry and regularly hosts events that draw large groups of people. The wintertime events, such as the Christmas lighting festival, required a large number of people to walk along the highway through melted snow puddles in areas where delineation from the adjacent highway is obscured and sidewalks are limited.

The highway has minimal illumination. Tourists walk from hotels to the business district and could benefit from additional lighting along the roadway.

Context

This project is rural in nature with adjacent recreational and business land use. Residential areas back the business land use on one side, and the Wenatchee River is located on the other. Hotels are present in this tourist destination in relatively high numbers. The town has a Bavarian theme, and structures and amenities adhere to this type of development. The speed limit at the entrance of the city is 50 mph and it is lowered to 30 mph. The area is environmentally sensitive throughout, and surrounded by national forest, the Wenatchee River, and creeks. Pedestrian facilities are provided along the corridor in the town core, although limited elsewhere. Pedestrian volumes can be very high during the winter and summer tourist seasons.

Initial Design Concept

To relieve congestion and increase capacity and safety for pedestrian and vehicular traffic, this project will reconstruct the existing roadway to include concrete curbing, gutters, sidewalks, storm drainage, illumination, bike lanes, transit bus stops, turn pockets, and landscaping. A park-and-ride lot and bus pullouts will be included to enhance the ability of pedestrians to access the business center.

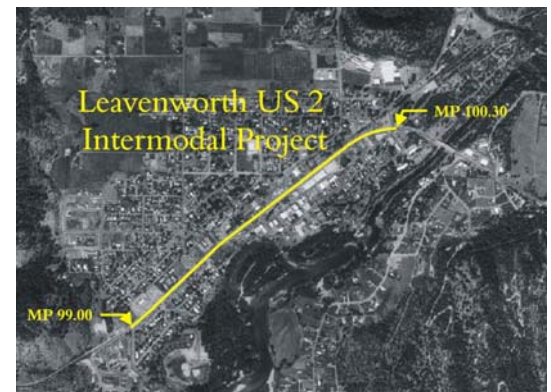
Challenges

The project was constructed under traffic. It was a challenge to provide access to customers during construction that included modification of the grade and elevation of the business approaches.

There were approximately 51 businesses adjacent to US-2 throughout this project. The placement of luminaires, electrical boxes, and other features relative to businesses was a challenge.

During the excavation of the storm sewer, large amounts of rocks and boulders were found that were not previously accounted for.

Exhibit 1 – Project Vicinity Map



DRAFT

Challenges

- Business access during construction
- Approach grades
- Location of luminaries
- Unanticipated rocks and boulders in the excavation site

Funding

Washington State Department of Transportation’s (WSDOT’s) budget for this project was about \$75,000. The city of Leavenworth’s budget from local, federal and the Transportation Improvement Board (TIB) was about \$1.8 million. The overall project budget was about \$1.9 million.

Schedule

Construction was completed in September 1995.

Process

Public Participation

Several Open Houses were held in the city of Leavenworth throughout 1994 to answer questions on sidewalk design, curb cuts for businesses, signing, bus shelter design, traffic marking, and landscaping issues, among others.

The city of Leavenworth and WSDOT coordinated design meetings with multiple agencies on a regular basis throughout the design phase to make design decisions. The city established a Design Review Committee to facilitate communication between the design office and the community.

Results

Design /Construction Considerations

Solutions

- Public participation
- Work with contractor and business owners to lessen traffic impact
- Place luminaries based on negotiations with business owners
- Setting up special provisions in the contract to address rock excavation

During the design phase, several business owners were looking for alternatives for the placement of luminaries and bus shelters. As a result of open communication and negotiations, the design was completed and addressed most of the needs of the business owners.

WSDOT negotiated the resolution pertaining to the rocks and boulders in the excavation process by setting up special provisions in the contract.

Traffic Impact

To minimize the initial impact to businesses, the contract required the contractor to provide the additional two-way left-turn lane in the commercial areas during the winter holiday period to assist shoppers accessing the businesses.

Exhibit 2 – Finished Sidewalk and Bus Shelter



Exhibit 3 – Finished Patterned Sidewalk

